

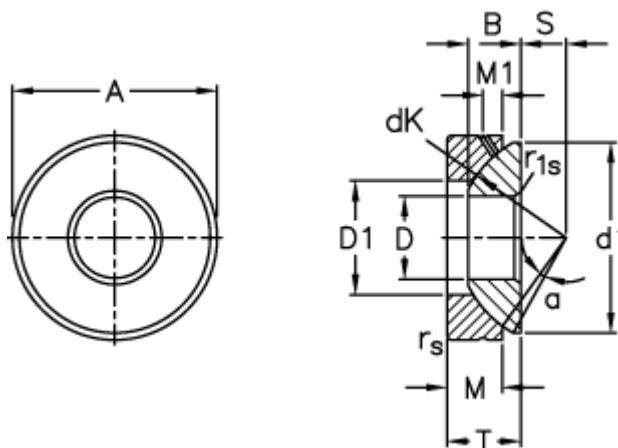
Data Sheet



Article number: 03511120

Description: Fluro Rod end GE 120AX

Measures



A	= 230 0 -0,030	M1	= 16.5
B	= 53.5	rs, r1s min	= 1.1
D	= 120 0 -0,020	S	= 52.5
d1 max	= 220	Static axial load C0 (kN)	= 6200
D1 min	= 145	T	= 64 +0,25 -0,60
dK	= 250	Tilt angle	= 3
Dynamic axial load C (kN)	= 1250	Weight	= 13900
M	= 50		